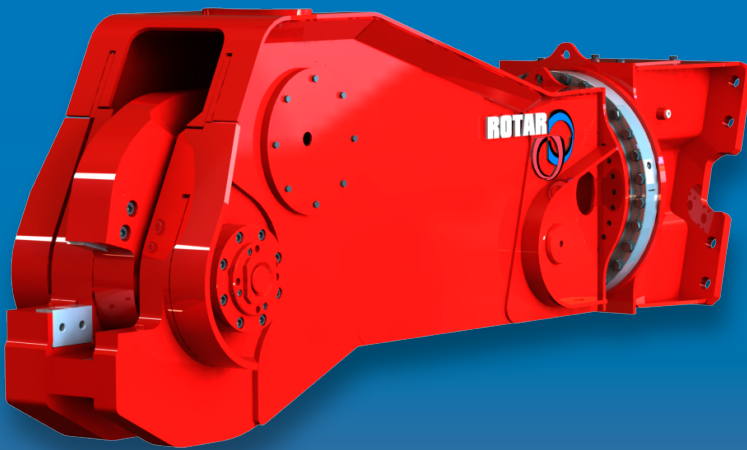


▶ Rotar Rail Cutter

A new concept Rail Cutter. The Rotar RRC-Series rail cutter, is designed for professional breaking of rail tracks. During the breaking of rails on recycling yards as well during replacements and servicing of the rail tracks, the Rotar Rail cutter comes into his element. In a simple way, with enormous power, the rail breaker is capable to cut large amounts of rails within a very short time. A powerful cylinder in a strong construction, made from very high quality material, ensures a perfect rail breaker. The design of the jaw, is partly responsible for the effective breaking of the rails as well for the logistic handling and positioning.



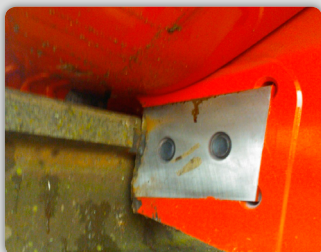
Application:
Metal recycling companies, railway maintenance contractors

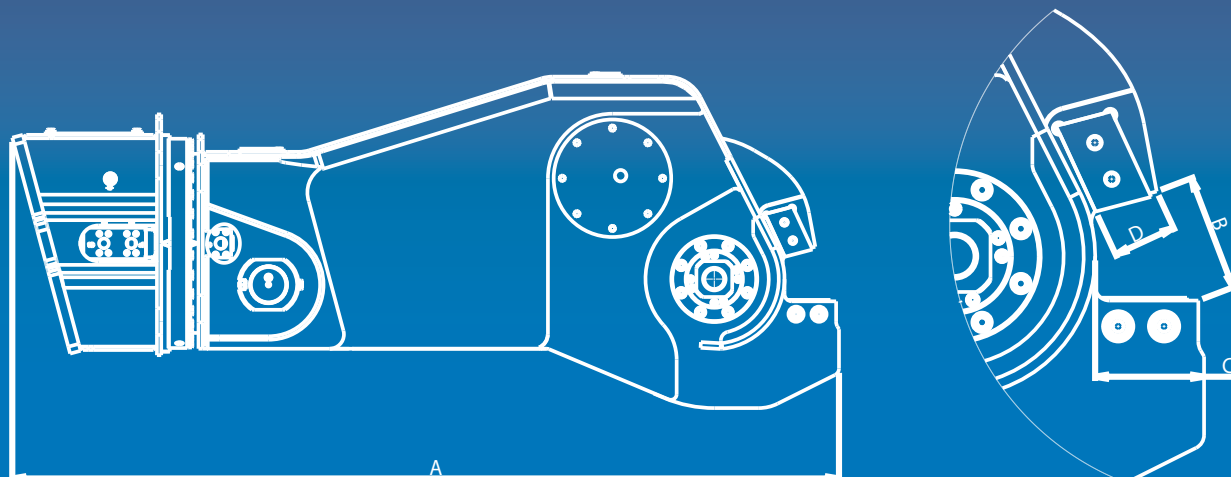
▶ Features

- Extreme cutting force
- Fast cycle times
- 360° rotation
- Jaws with interchangeable wear blades
- Suspension by a top-plate
- Service friendly

▶ Rail Cutter

- ▶ Scrap Shear
- ▶ Sorting/Demolition Grab
- ▶ Rotar Cleaner
- ▶ Hydraulic Breaker
- ▶ Segregator Bucket
- ▶ Tyne Re-handling Grab
- ▶ Crusher Bucket
- ▶ Pulverizer
- ▶ Combi Shear
- ▶ Steel Shear





Type RRC	25
Information	
EXCAVATOR BOOM MOUNTED (TON)	25
EXCAVATOR STICK MOUNTED (TON)	38
WEIGHT (KG)*	3500
ROTAR HOLE-PATTERN	200
Dimensions	
DIMENSION A (MM)	2884
DIMENSION B (MM)	204
DIMENSION C (MM)	190
DIMENSION D (MM)	111
Open / Close	
PRESSURE MAX. (BAR)	250
FLOW MAX. (LPM)	450
Rotation	
PRESSURE MAX (BAR)	170
FLOW MAX. (LPM)	50

* Weight exclusive adapterplate with bracket

specifications may change without prior notice

Your Attachment Supplier