

## ▶ Rotar Sorting/Demolition Grab

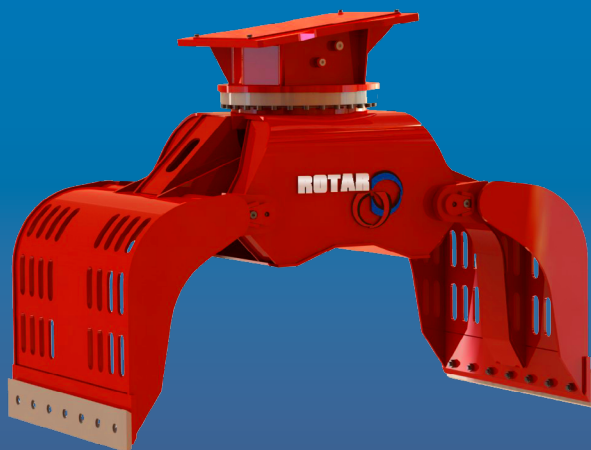
Rotar launch a new range of 9 sorting-/ demolition grabs. Those grabs fulfil the current expectations of the professional operators, in heavy industrial demolition applications as well as in the intensive sorting- and recycling plants.

By use of a double-walled construction in the design, the mainframe is extremely heavy duty and stiff. The extra width of the hinge-points, results in more contact surface, and are assembled with wear- / grease bushings and dust-seals. The shells are mounted with HD-pins in the mainframe. All pins are surface hardened. The grabs have centred end stops for opening the grab.

The rotator heads are fitted with high quality stainless steel bearings and driven by (Parker) hydraulic motors. The motors are origin fitted with an integrated cross-over valve. (shock-valve)

The RG-grabs are equipped with one centred cylinder fitted with a load-control valve of SUN-hydraulics.

The shells of the grabs are standard fitted with reversible bolded cutting edges of 500 HB.

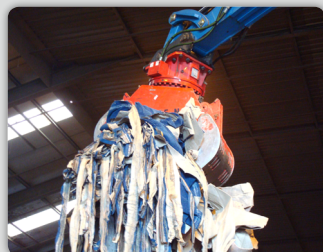
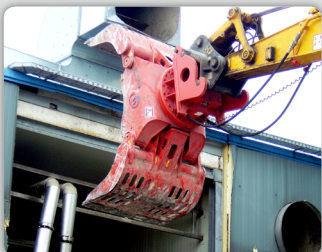


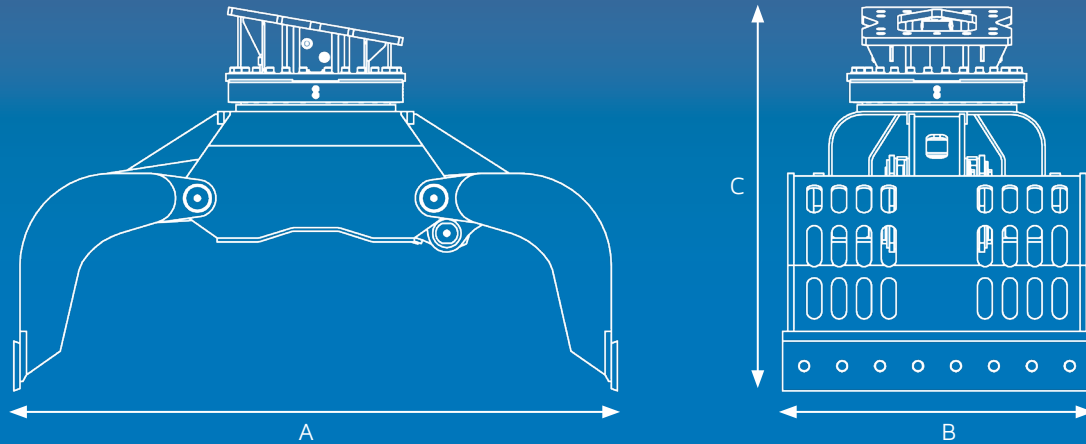
By recent developments, we succeeded to built the grabs with fewer components, without any concessions on functionality, reliability and safety. The RG-Series offers a high grade of availability and reliability.

The new RG-Series are designed and built with many years of experiences on our previous grab lines. The grabs are in line with our credo "Simplicity the Best"

## ▶ Sorting/Demolition Grab

- ▶ Scrap Shear
- ▶ Rotar Cleaner
- ▶ Hydraulic Breaker
- ▶ Segregator Bucket
- ▶ Tyne Re-handling Grab
- ▶ Crusher Bucket
- ▶ Pulverizer
- ▶ Combi Shear
- ▶ Steel Shear
- ▶ Rail Cutter





Type RG	5-N	9-N	12-N	15-N	22-N	28-N	37-N	48-N	60-N
<b>Information</b>									
HYDRAULIC EXCAVATOR (T)	2-5	5-9	10-15	14-18	15-22	20-28	25-37	35-48	45-60
WEIGHT (KG)	210	425	850	950	1300	1550	2020	2285	3860
CAPACITY (L)	100	140	325	400	530	620	875	1100	1500
CLOSING FORCE (kN)*	12	26	41	41	53	61	70	80	115
<b>Dimensions</b>									
DIMENSION A (MM)	1137	1350	1750	1830	2000	2190	2425	2425	3050
DIMENSION B (MM)	500	650	800	850	1000	1100	1200	1400	1500
DIMENSION C (MM)	703	975	1380	1420	1528	1463	1541	1566	1900
<b>Mounting</b>									
ROTAR HOLE-PATTERN	100	110-120	130-140	130-140	130-140	140-150	140-150	140-150	200
<b>Hydraulic</b>									
MAX. OPERATION PRESSURE CYLINDER BAR	320	320	320	320	350	350	350	350	350
OIL-FLOW CYLINDER LPM	35	50	80	80	100	100	120	120	200
MAX. OPERATION PRESSURE MOTOR BAR	120	120	140	140	140	170	170	170	170
OIL-FLOW MOTOR LPM	20	20	40	40	40	40	40	40	40

\* Closing force by 320 Bar  
 \*\* Standard perforated shells  
 - Rib / closed shells optional

specifications may change without prior notice

*Your Attachment Supplier*