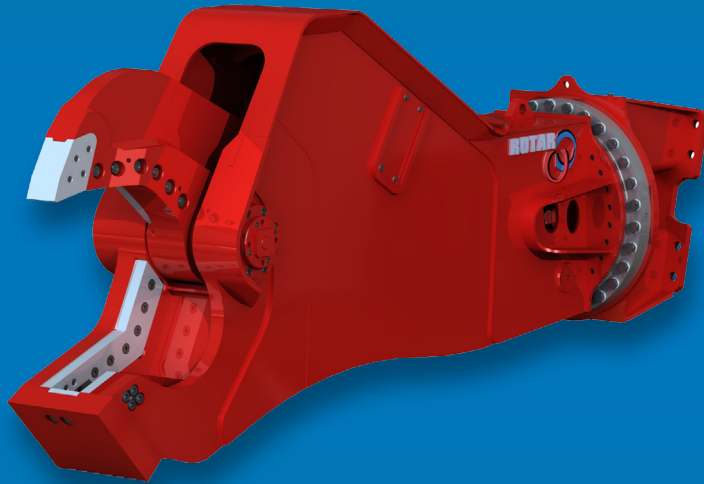


▶ Rotar Scrap Shear

A new generation scrap shears who easily deals with the hardest circumstances on industrial scrap yards.



A powerful cylinder in combination with the integrated speed-valve guarantees an excellent cutting force. Well balanced hydraulics together with a heavy duty construction made of wear resistance steel, turns into a valuable piece of equipment with great performances.

Some applications are: Scrap yards, demolition, recycling, shipwrecking.

▶ Features

- Extreme cutting force (power)
- Fast cycle times
- 360° rotation
- Indexable cutting edges
- Pocket nose-blades fully protected
- Bolt-on adapter
- Service friendly

▶ Scrap Shear

▶ Sorting/Demolition Grab

▶ Rotar Cleaner

▶ Hydraulic Breaker

▶ Segregator Bucket

▶ Tyne Re-handling Grab

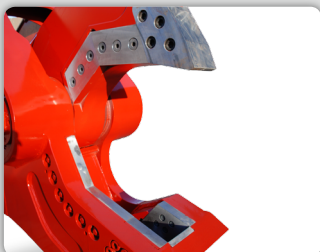
▶ Crusher Bucket

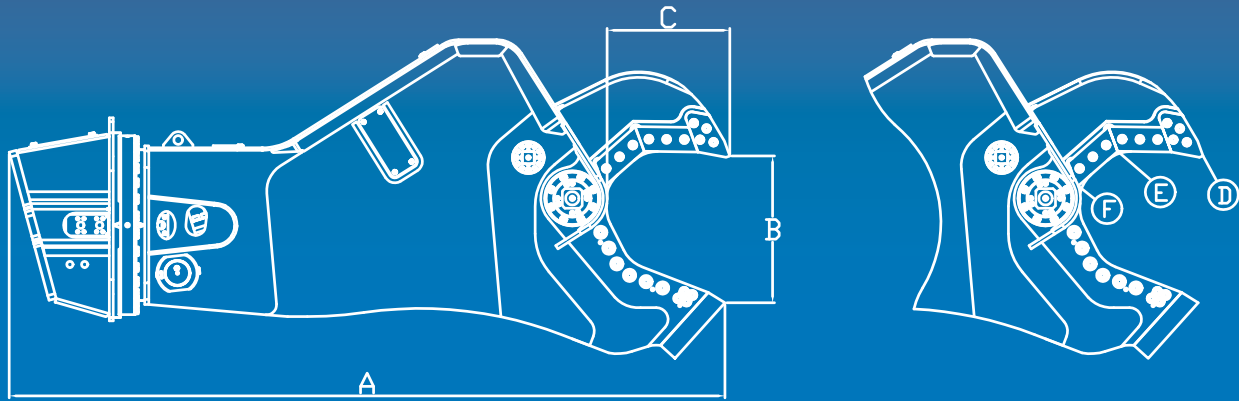
▶ Pulverizer

▶ Combi Shear

▶ Steel Shear

▶ Rail Cutter





Type RSS	20	30	40	50	100
Information					
EXCAVATOR BOOM MOUNTED (TON)	16	20	25	30	45
EXCAVATOR STICK MOUNTED (TON)	21	32	38	50	65
WEIGHT (KG)*	2500	3590	4440	6180	8250
ROTAR HOLE-PATTERN	140-150	200	200	200	200
Dimensions					
DIMENSION A (MM)	2657	3275	3635	3980	4835
DIMENSION B (MM)	445	607	750	782	947
DIMENSION C (MM)	416	544	625	701	903
Cutting force					
TIP** (D) (TON)	130	156	168	201	242
APEX** (E) (TON)	240	296	319	390	467
THROAT** (F) (TON)	532	664	813	955	1338
Open / Close					
PRESSURE MAX. (BAR)	350	350	350	350	350
FLOW MAX. (LPM)	240	450	450	450	750
Rotation					
PRESSURE MAX (BAR)	170	170	170	170	170
FLOW MAX. (LPM)	50	50	50	50	50

* Weight exclusive adapterplate with bracket
 ** Cuttingforce measured at 350 bar
 *** Dimensions under construction

specifications may change without prior notice

Your Attachment Supplier