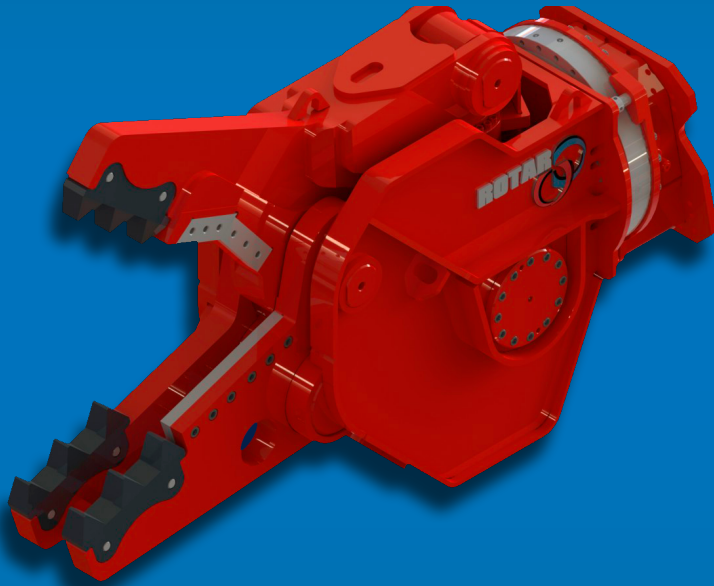


▶ Rotar Combi Shear

The Rotar Combi Shear is the ideal attachment for primary demolition. To dismantle constructions made of concrete, steel or even a combination of it. The combi shear cuts his way in any construction.



The combi shear is 360° rotateable and characterized by his excellent performance. By optimisation of the hydraulic system, the shear works extremely efficient in cycle times (open / close) but also in combination with the carrier, it shows a favourable fuel consumption.

A powerful cylinder fitted with a speed valve together with the shaping of the jaws creates a well penetration in the materials.

All wear parts can be taken apart, whereby those easily can be replaced without big efforts. *(modular and repeating which results in less stock parts and improves the use of wear parts)*

The Rotar Combi Shear is made of high quality wear resistance steel in combination with hydraulic components of well known trades.

The range of shears exists in 4 different sizes. By the low weight, the optimum centre of gravity and the great performance, it's the ideal attachment for each demolition contractor.

▶ Combi Shear

▶ Sorting/Demolition Grab

▶ Scrap Shear

▶ Rotar Cleaner

▶ Hydraulic Breaker

▶ Segregator Bucket

▶ Tyne Re-handling Grab

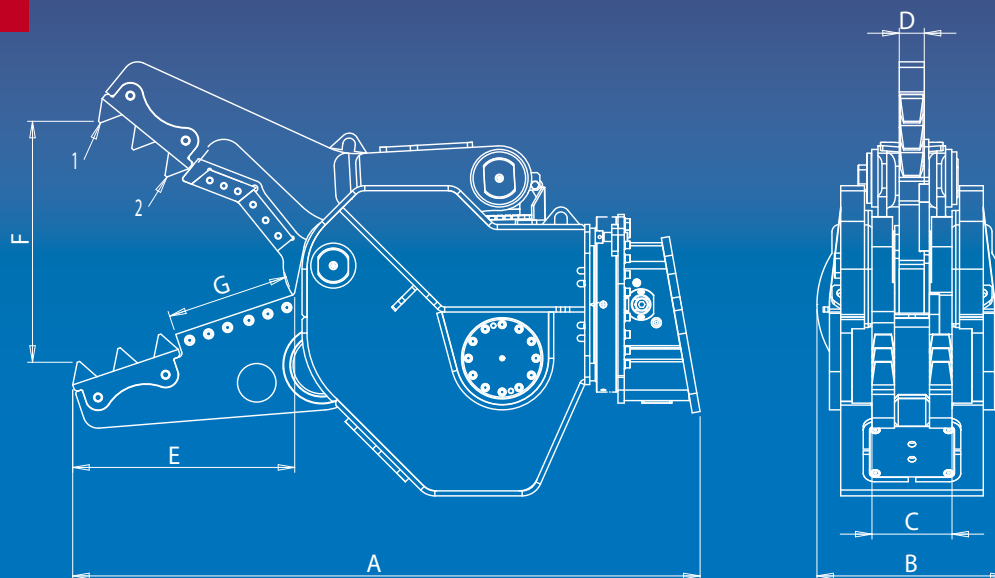
▶ Crusher Bucket

▶ Pulverizer

▶ Steel Shear

▶ Rail Cutter





Type RDC	20 S	25 S	32 S	42 S
Information				
WEIGHT (KG) *	1800	2670	3050	4100
OPEN / CLOSE (SEC.)	1,9 - 1,2	2,2 - 2,4	2,5 - 2,8	2,6 - 2,8
CUTTING FORCE POSITION 1 (T)	63	68	85	102
CUTTING FORCE POSITION 2 (T)	80	100	125	140
HYDRAULIC EXCAVATOR (T)	15 - 25	24 - 35	30 - 45	45 - 70
ROTAR HOLE-PATTERN	140-150	140-150	140-150	150
Dimensions				
DIMENSION A (MM)	2100	2259	2508	2730
DIMENSION B (MM)	760	760	760	880
DIMENSION C (MM)	280	320	320	340
DIMENSION D (MM)	90	100	100	100
DIMENSION E (MM)	650	775	880	1020
DIMENSION F (MM)	750	900	955	1230
DIMENSION G (MM)	400	400	500	600
Hydraulic				
MAX. OPERATION PRESSURE CYLINDER (BAR)	350	350	350	350
MAX. OPERATION PRESSURE MOTOR (BAR)	170	170	170	170
OIL-FLOW CYLINDER (L/MIN.)	150 - 250	150 - 250	250 - 300	250-350
OIL-FLOW MOTOR (L/MIN.)	40 - 60	40 - 60	40 - 60	40 - 60

* Weight exclusive adapterplate with bracket

specifications may change without prior notice

Your Attachment Supplier

ROTAR INTERNATIONAL BV | SCHERING 27 | 8281 JW GENEMUIDEN | POSTBUS 174 | 8280 AD GENEMUIDEN

TEL. +31 (0) 38 385 5471 | FAX. +31 (0) 38 385 5402 | E-MAIL: INFO@ROTAR.COM | WWW.ROTAR.COM