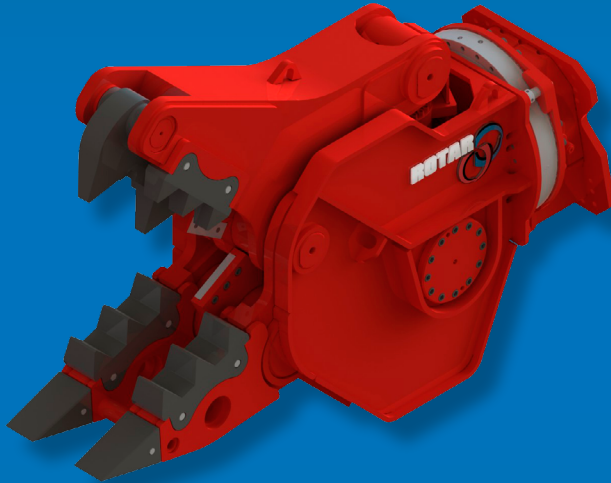


## ▶ Rotar Pulverizer

The Rotar Pulverizer is the ideal attachment for primary- as well as secondary demolition. It easily crush reinforced concrete and separates it on the jobsite or afterwards. The pulverizer bites simply in anything.



The pulverizer is 360° rotateable and characterized by his excellent performance. By optimisation of the hydraulic system, the pulverizer works extremely efficient in cycle times (open / close) but also in combination with the carrier it shows a favourable fuel consumption.

A powerfull cilinder fitted with a speedvalve together with the shaping of the jaws creates a well penetration in - and free fall of the materials.

All wearparts can be taken apart, whereby those easily can be replaced without big efforts. *(modulair and repeating which results in less stock parts and improves the use of wearparts)*

The Rotar pulverizer is made of high quality wearresistance steel in combination with hydraulic components of well known trades.

The range of pulverizers exist in 4 different sizes. By the low weight and optimum centre of gravity, is it the ideal attachment for each demolition contractor.

*(Ps.The Rotar Pulverizer is also available without rotation)*

## ▶ Pulverizer

▶ Sorting/Demolition Grab

▶ Scrap Shear

▶ Rotar Cleaner

▶ Hydraulic Breaker

▶ Segregator Bucket

▶ Tyne Re-handling Grab

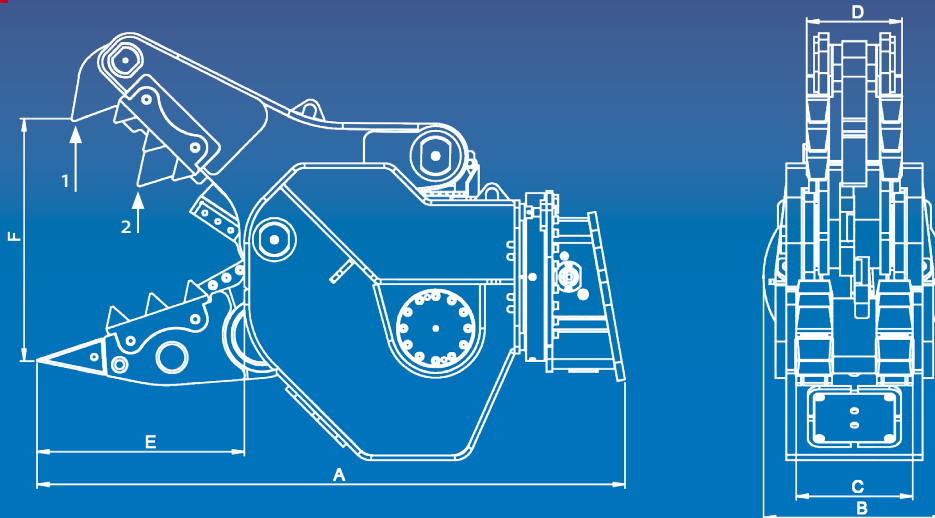
▶ Crusher Bucket

▶ Combi Shear

▶ Steel Shear

▶ Rail Cutter





| Type RDP                               | 20 S      | 25 S      | 32 S      | 42 S      |
|--|-----------|-----------|-----------|-----------|
| <b>Information</b>                     |           |           |           |           |
| WEIGHT (KG) *                          | 2100      | 2765      | 3100      | 4500      |
| OPEN / CLOSE (SEC.)                    | 1,9 - 1,2 | 2,2 - 2,4 | 2,5 - 2,8 | 2,6 - 2,8 |
| CUTTING FORCE POSITION 1 (T)           | 62        | 70        | 95        | 105       |
| CUTTING FORCE POSITION 2 (T)           | 100       | 107       | 152       | 195       |
| HYDRAULIC EXCAVATOR (T)                | 15 - 25   | 24 - 35   | 32 - 50   | 45 - 70   |
| ROTAR HOLE-PATTERN                     | 140-150   | 140-150   | 140-150   | 150       |
| <b>Dimensions</b>                      |           |           |           |           |
| DIMENSION A (MM)                       | 2100      | 2270      | 2458      | 2640      |
| DIMENSION B (MM)                       | 760       | 760       | 760       | 880       |
| DIMENSION C (MM)                       | 390       | 479       | 495       | 556       |
| DIMENSION D (MM)                       | 310       | 350       | 398       | 470       |
| DIMENSION E (MM)                       | 750       | 822       | 867       | 930       |
| DIMENSION F (MM)                       | 845       | 974       | 1000      | 1230      |
| DIMENSION G (MM)                       | 200       | 200       | 200       | 250       |
| <b>Hydraulic</b>                       |           |           |           |           |
| MAX. OPERATION PRESSURE CYLINDER (BAR) | 350       | 350       | 350       | 350       |
| MAX. OPERATION PRESSURE MOTOR (BAR)    | 170       | 170       | 170       | 170       |
| OIL-FLOW CYLINDER (L/MIN.)             | 150 - 250 | 150 - 250 | 250 - 300 | 250-350   |
| OIL-FLOW MOTOR (L/MIN.)                | 40 - 60   | 40 - 60   | 40 - 60   | 40 - 60   |

\* Weight exclusive adapterplate with bracket

specifications may change without prior notice

*Your Attachment Supplier*